

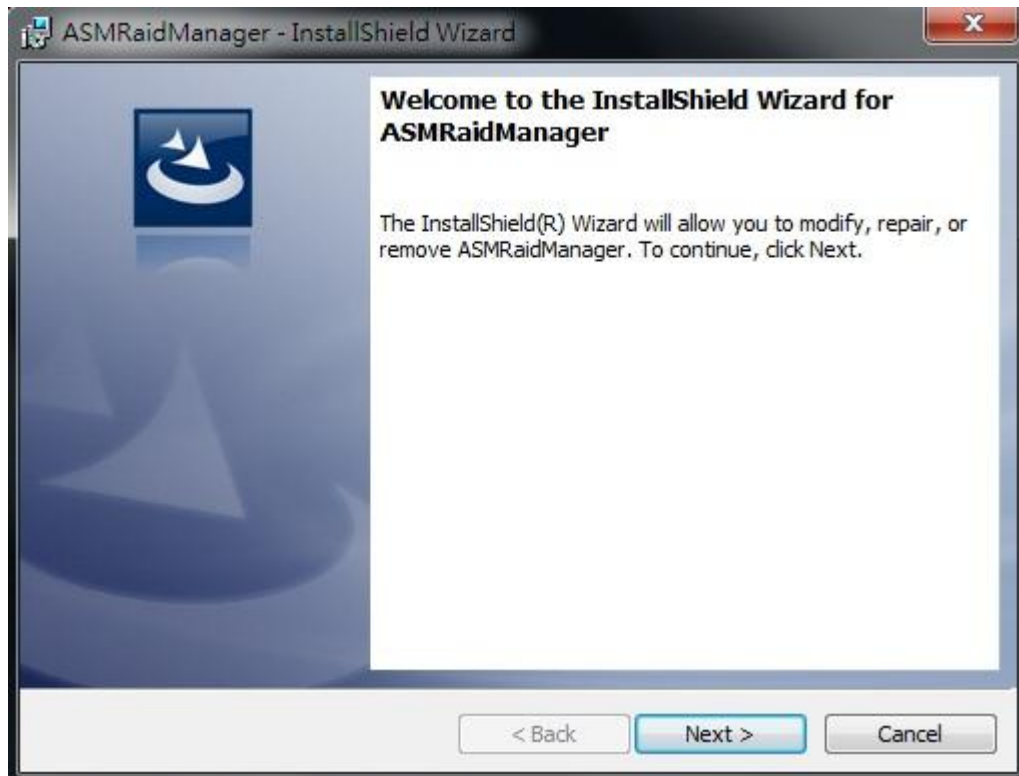
RAID Manager Tool User Manual v3.114

Catalogue

1.	Starting RAID Manager Tool.....	3
2.	Program Main Menu	4
2.1、	RAID information.....	4
2.2、	Mode Change.....	5
2.3、	Advanced Setting.....	7
2.3.1、	Email Notification.....	7
2.3.2、	Event Log	8
2.3.3、	Other Configurations.....	9

1. Starting RAID Manager Tool

Please set up RAID Manager Tool Install Shield.



Note: please use administrator to open the RAID Manager Tool SETUP file.
The RAID Manager Tool supports ASM135 、ASM106B 、ASM109.

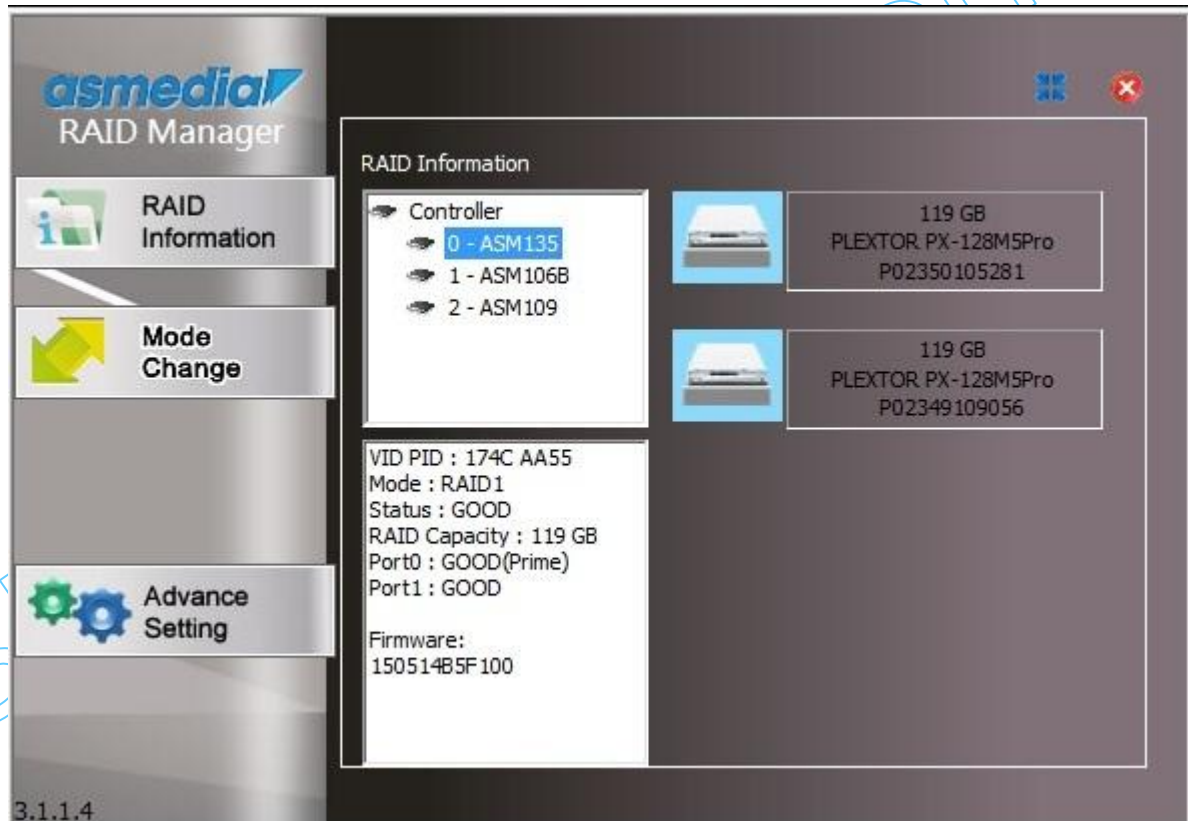
2. Program Main Menu

2.1 、 RAID information

(1) Detecting ASM135 、 ASM106B 、 ASM109Controller

If there is no controller device connected to host, then this program will not show of this item.

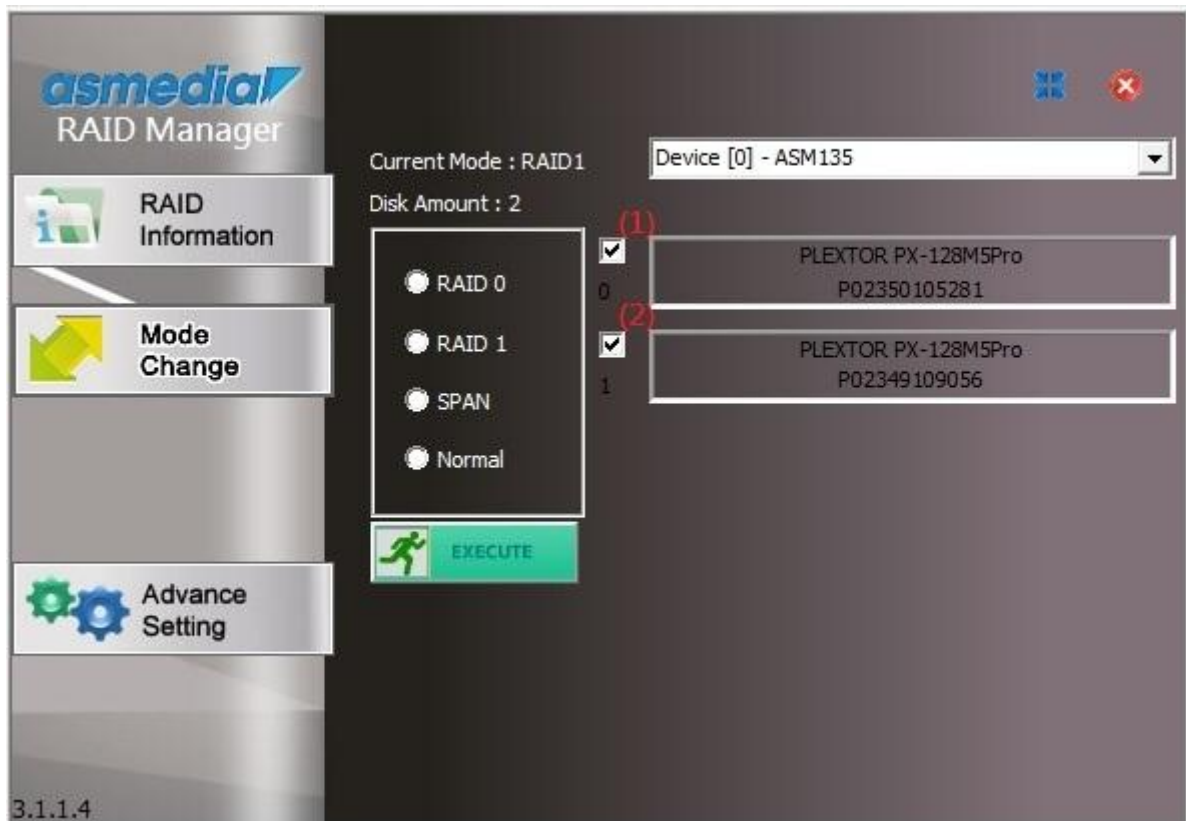
To click the device will show the detail status of Controller.



(2) To push X button will hide Main Menu into notification-area. If user wants to turn off the tool, needs to disable it in system notification.



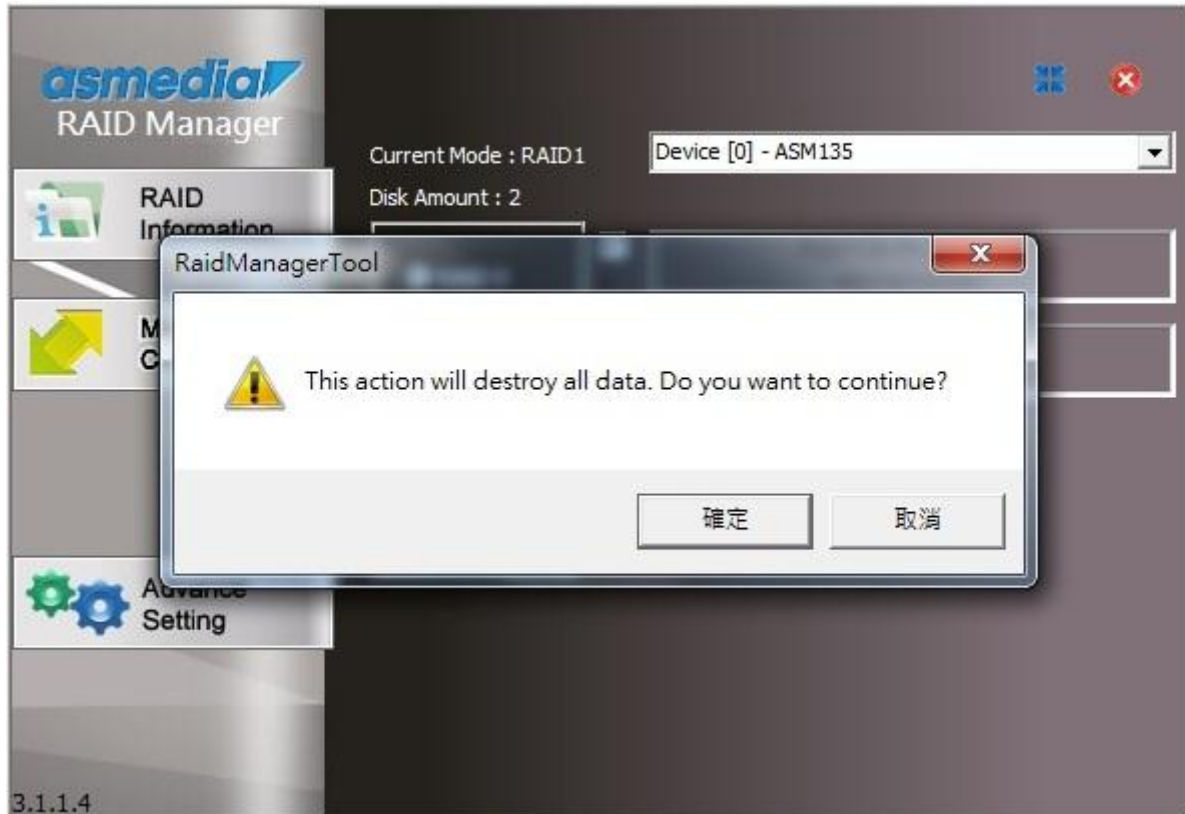
2.2 、 Mode Change



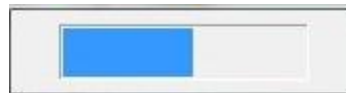
After choosing device, tool will show HDDs which are available to be built RAID.

- (1) If you want to add disk into the RAID group, please tick the disk.
- (2) It is the order of disks in the RAID group.

After pressing “EXECUTE”, tool will pop out the warning “This action will destroy all data.”



PS1 : After mode change is completed, the window will show a waiting connection, please wait till window disappear then operate ASM106xR RAID Manager.



2.3 、 Advanced Setting

2.3.1 、 Email Notification

The screenshot shows the 'asmedia RAID Manager' application window. On the left is a sidebar with buttons for 'RAID Information', 'Mode Change', and 'Advance Setting'. The main area has three tabs: 'Email', 'Event Log', and 'Other Config'. The 'Email' tab is selected, displaying the following configuration options:

- To :** jimmy_hu@asmedia.com.tw
- From :** huhua1984@gmail.com
- Subject :** 106B Manager Event Report
- SMTP Setting :**
 - SMTP :** smtp.gmail.com
 - Port:** 587
- User Name :** huhua1984@gmail.com
- Password :** (masked with asterisks)
- Test Email** button
- Notification Event** section with checkboxes:
 - ☒ RAID Created
 - ☐ RAID Broken
 - ☐ Disk Plug In
 - ☒ RAID 1 Rebuilding Finished
 - ☒ RAID 1 Rebuild Error
 - ☒ Disk Plug Out
 - ☒ RAID Deleted
 - ☐ RAID Degraded
- Apply** button

To: Recipient Address

From: Sender Address

Subject: (subject)

SMTP: Sender Mail Server SMTP

Port: Mail Server Port

User Name: Log-in account (email)

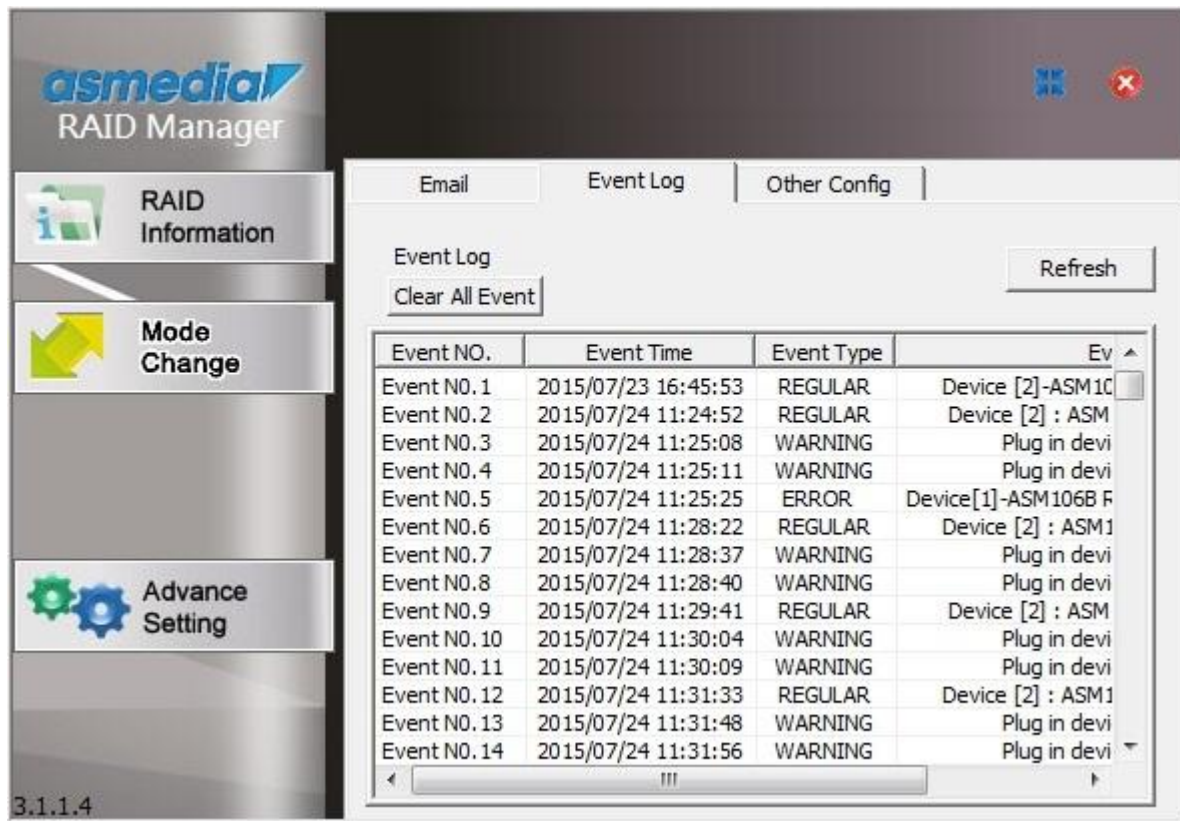
Password: (email password)

Notification Event: Select the event notification that user wants to send via E-mail.

Pushing “Apply” button after completed the setting.

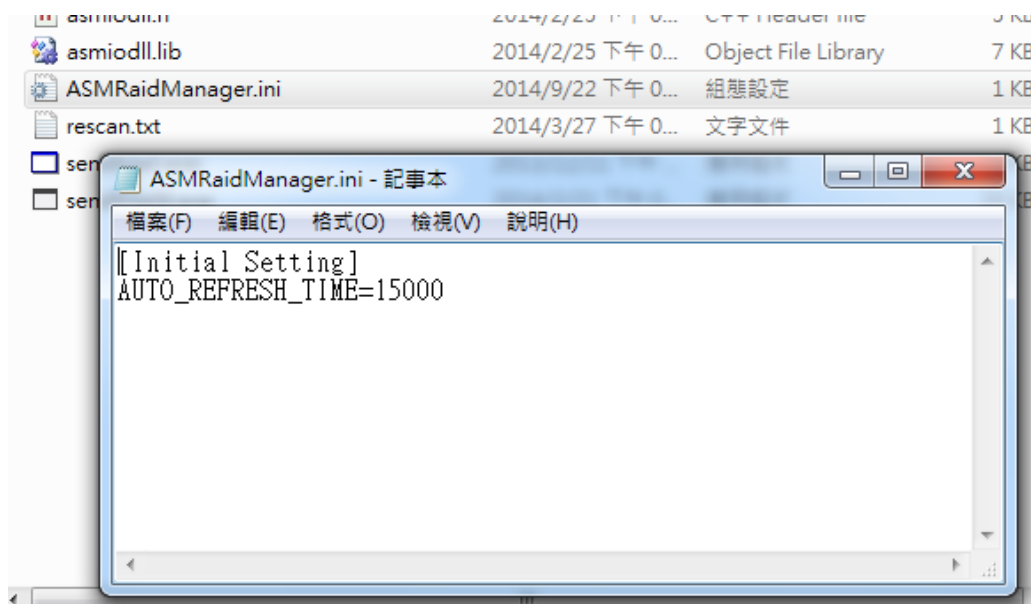
To fill in the email information and save, push “Test Email” button to send the testing email.

2.3.2 、 Event Log



Showing the event records of RAID Manager Tool.

2.3.3 、 Other Configurations



Auto Refresh Time:

If user wants to change/update the interval of RAID info, please open "ASMRaidManager.ini" and modify the number following "AUTO_REFRESH_TIME="

The default value is 15000(ms).